



Our mission is to foster academic growth, social development, greater independence, and career advancement for students with intellectual disability (ID) by creating inclusive college opportunities throughout Colorado.



ONE STORY >>>>

Emily, a junior in the GOAL program at the University of Northern Colorado (UNC), is living proof that **college inclusion for students with ID is possible and powerful.**

Like so many students with ID, Emily spent much of her K-12 career feeling stifled by others' assumptions of her capability: "I thought college, specifically a four-year college, was never going to be a thing for me." However, Emily did not allow the low expectations of many of her teachers, family members, or peers to derail her ambitions.

As a GOAL student, Emily has the opportunity to study psychology, work on campus, and live away from her parents, all while receiving the support she needs to **fully participate and pursue her goals.** Such experiences allow Emily to develop essential skills for an independent life: "Being away from home, getting to be my own person, and [becoming] an adult has meant a lot to me!" Emily has been employed at the university's Disability Resource Center for three years, where she helps fellow students with disabilities navigate the college environment. And the best part of Emily's IHE experience? She receives the same treatment and has the same access as any other UNC student - **true inclusion.**

After years of academic and social exclusion, Emily is experiencing the **life-changing impact** of inclusion in higher education, defying societal expectations, and setting an example for countless other students with ID!

"I don't think anybody should be able to tell you what you are and are not capable of."
- Emily
@ UNC GOAL

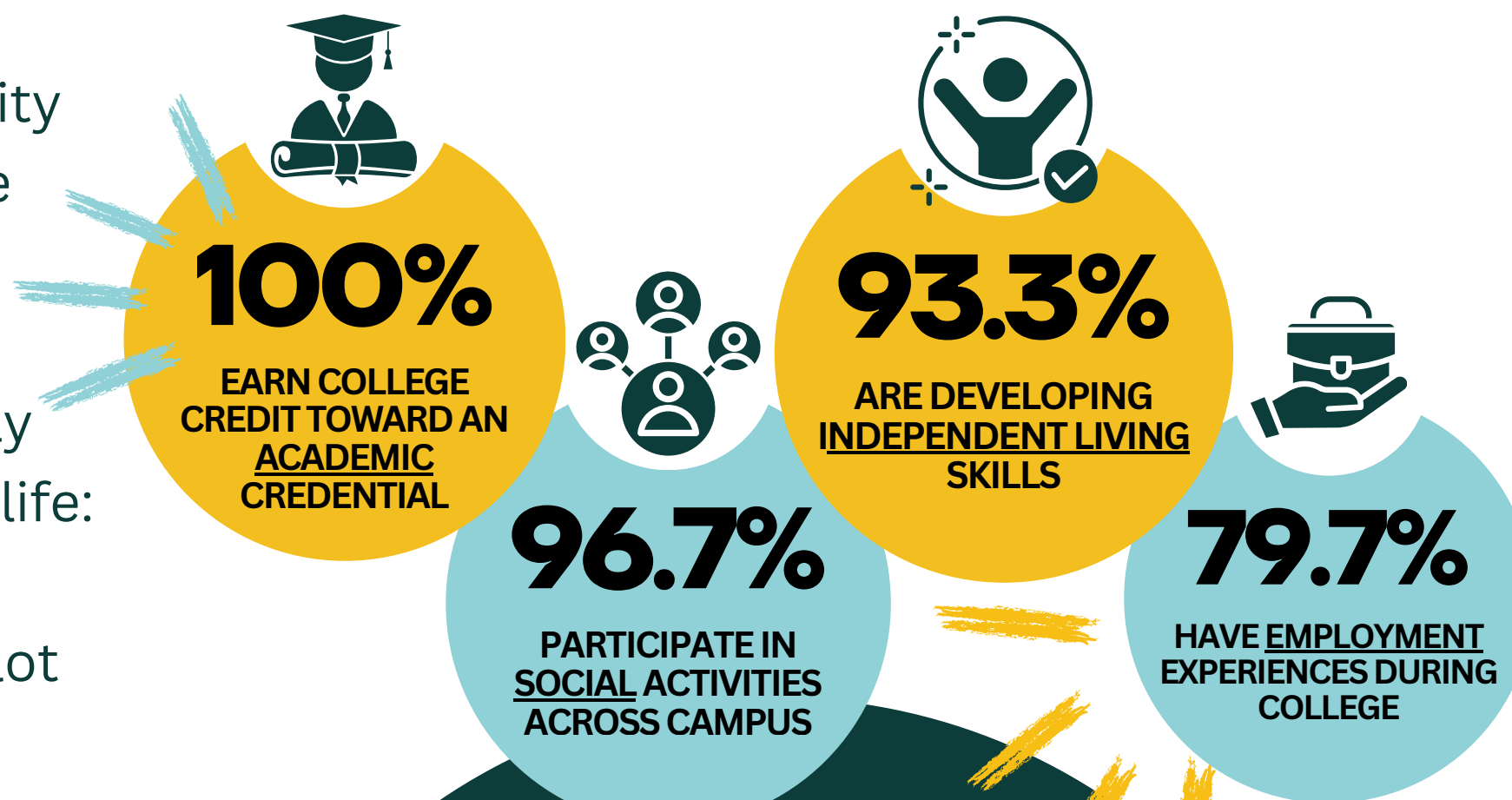
[Watch Emily's Video Here](#)



ONE STATE >>>>

With **8 inclusive higher education (IHE) pathways** in the state of Colorado, more than **120 students with intellectual disability** are enrolled each year - a remarkable increase from the very first cohort of 12 students just 10 years ago. Without IHE, these students would not have equal access to all the benefits of a higher education, including:

- College coursework aligned with career goals
- Normative, inclusive social engagement
- Independence and self-advocacy development
- Career exploration, preparation, and attainment



ONE VISION >>>>

A decade into IHE in Colorado, the impacts are clear. This is why IN! remains committed to the vision of ensuring inclusive pathways become part of the fabric of postsecondary education statewide.

JOIN IN!
CLICK HERE TO GIVE TODAY.

Get IN!volved! Visit inclusivehighered.org to learn more.