



**Developmental
Pathways**

About Developmental Pathways

Presented by Rachel Walker and Ashley Schirmer

November 30, 2023

How DP can help you or your student?

No cost services and programs

Transition to adult services

Day programs, employment, life skills, and more services.

Compliment higher ed supports



Agenda

1. Case Management

2. About Developmental Pathways

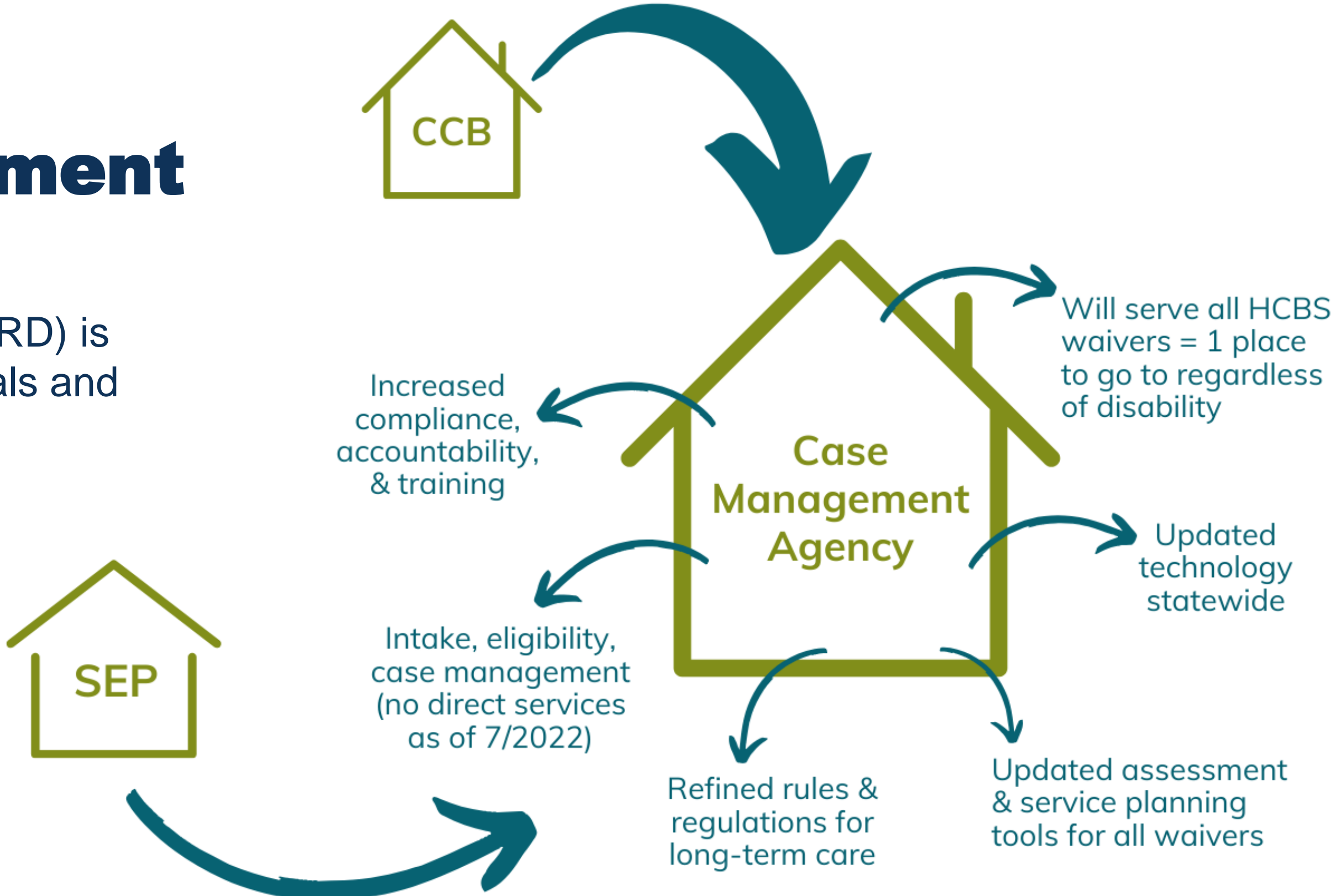
3. Programs

4. Questions

Colorado System Change: What is the change?

Future of Case Management

The systemic goal of Case Management Redesign (CMRD) is better outcomes for individuals and families across Colorado.



Developmental Pathways

Almost 60 years of service to our community

Total Estimated Population
Served as of July 2024:

16,793

12,556

Estimated Individuals
Served by CM After
CMRD

9,136

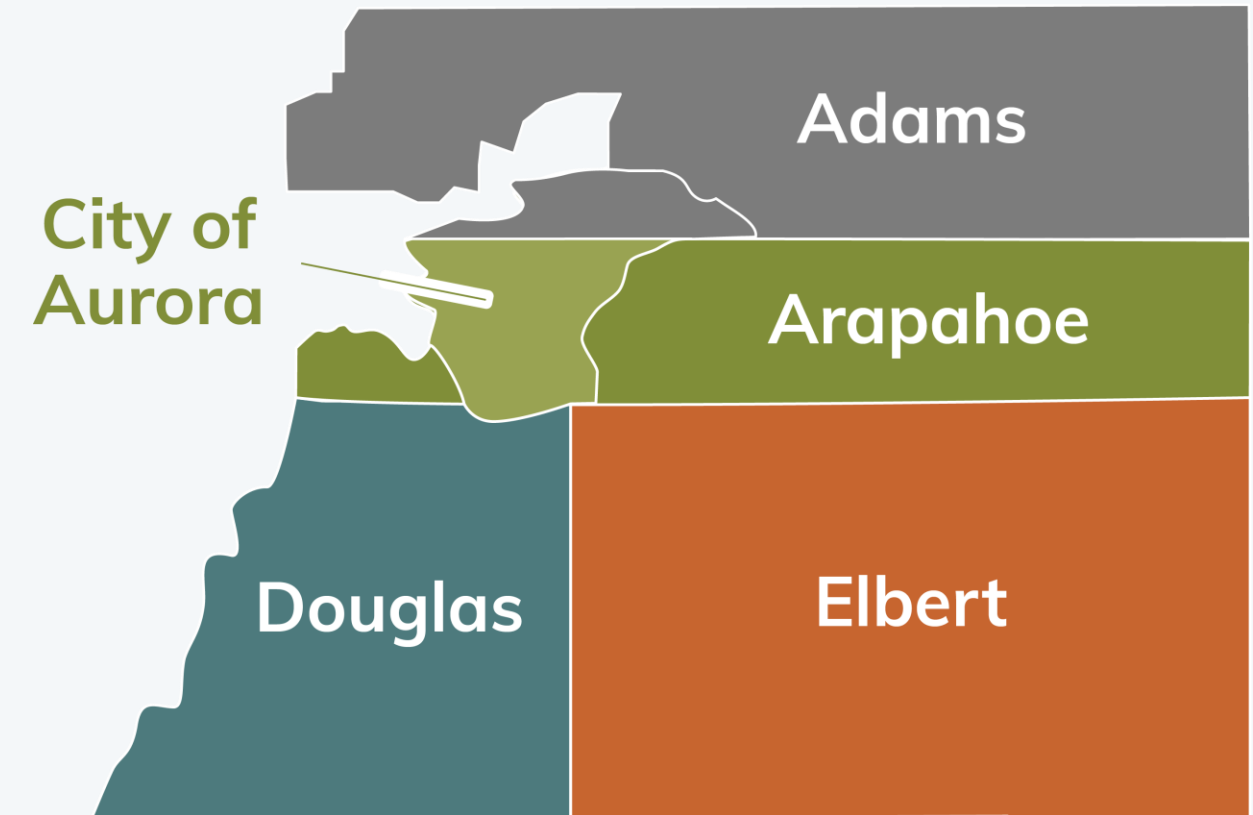
HCBS Waiver
Programs

2,873

Non-HCBS Waiver
Programs

547

State General
Funded Programs



* Early Intervention will
continue to serve Aurora
(including Adams County)

Who do we support?



**I/DD Children
& Adults**



**Children with
medical needs**



**Adults with
disabilities
(blind,
physical,
HIV/AIDS)**



**Adults with
mental health
needs**



**Adults with
brain or spinal
cord injuries**

Programs at DP



Community Outreach

HCBS Waivers



Early Intervention

Family Support

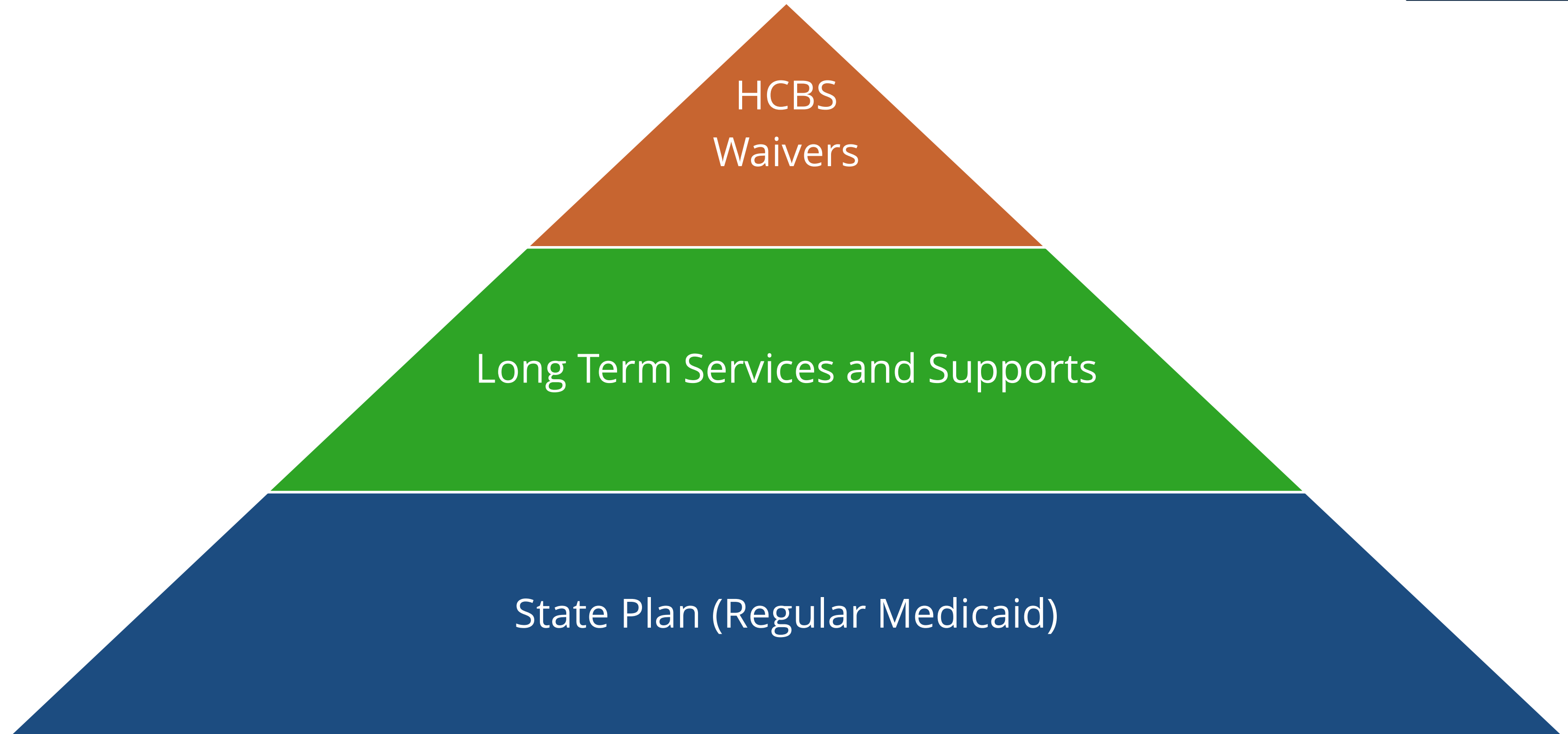
and more!

Home and Community Based Waivers

All ages



Benefits Pyramid



Children's Extensive
Supports

Children's Habilitation
Residential Program

Children with Life Limiting
Illness

Children's Home and
community – based
services waiver

**Supported Living
Services**

**Developmental
Disability**

**Elderly Blind and
Disabled**

**Community Mental
Health Supports
Waiver**

Brain Injury Waiver

**Complementary and
Integrative Health
Waiver**

Common Services and Supports



Supported Living Services (SLS)



Over 18

To help individuals live independently as possible

No waitlist

Services prioritized by needs assessment

Responsible for living arrangements

Developmental Disability (DD)



Over 18

Waitlist



Residential

24/7 support



What is the role of your Case Manager?



Connect

You with programs and resources.
Place referrals for your provider team.



Plan

Provide person centered planning and supports.



Compliance

Ensure you get services by maintaining state and federal compliance.



Customer Service

Someone for you to contact for additional help or questions.



Make a referral

In just a few easy steps!

Contact us

- Send an email or leave a voicemail.

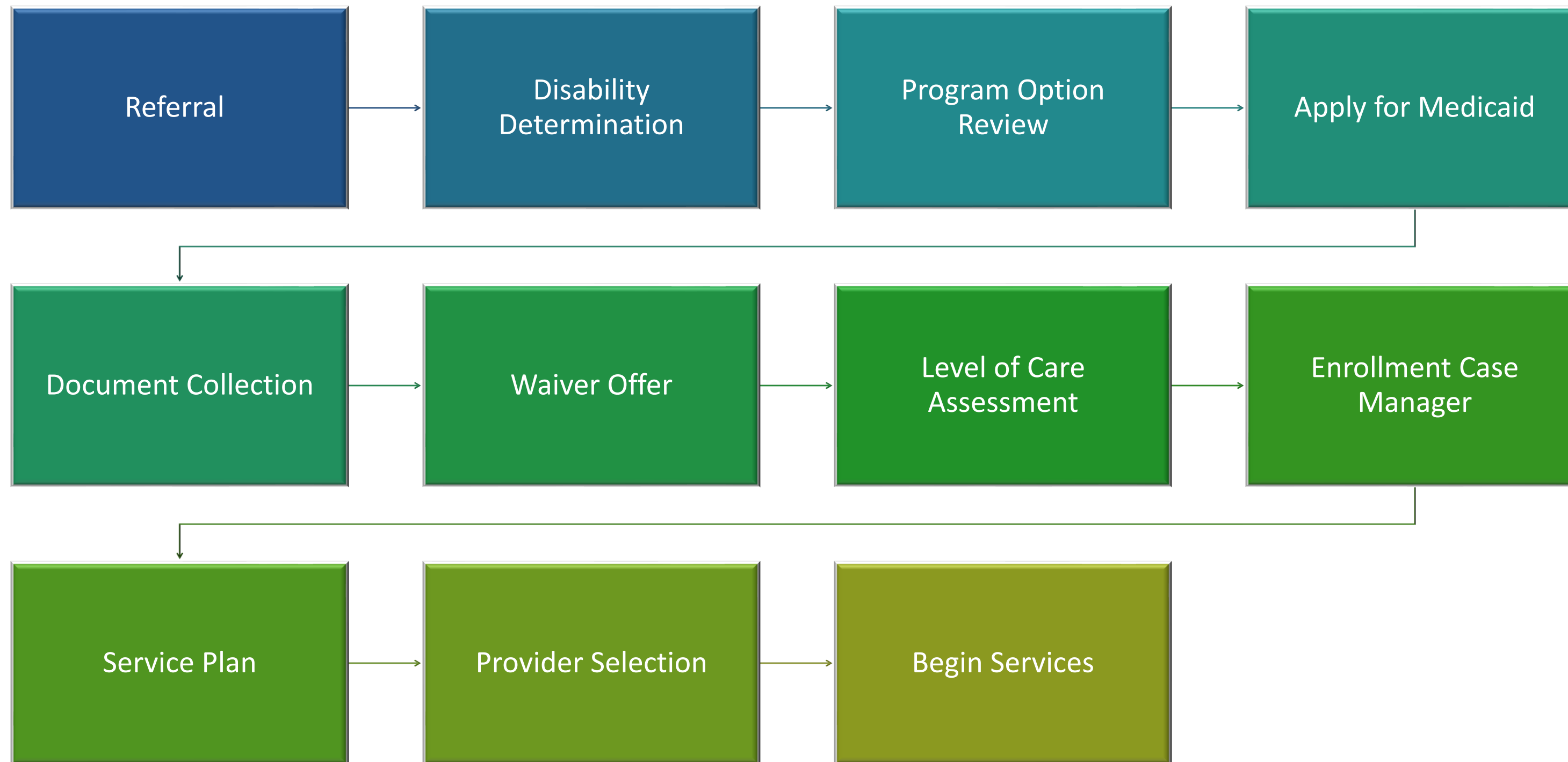
What to include

- Your name/info
- Student/family's name/info
- Summary of needs
- IEP/testing

That's it

- DP will follow up for next steps and to start to collect more info.

Path to Enrollment



[Intake and Enrollment Map](#)

Questions



**Developmental
Pathways**

303-360-6600

www.dpcolo.org

Rachel Walker, Community Partnerships Manager

720-705-6479

r.walker@dpcolo.org

Ashley Schirmer, Community Engagement Program Administrator

720-357-0755

a.schirmer@dpcolo.org

Case Management Intake

303-858-2260

intake@dpcolo.org



**Developmental
Pathways**

Thank You!